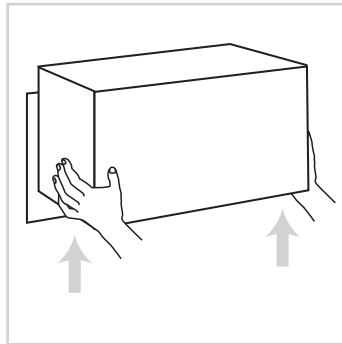
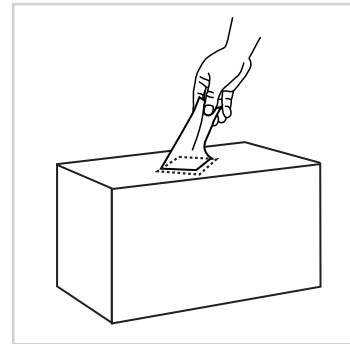


Usage Guide - WYPALL® X60 Wipers

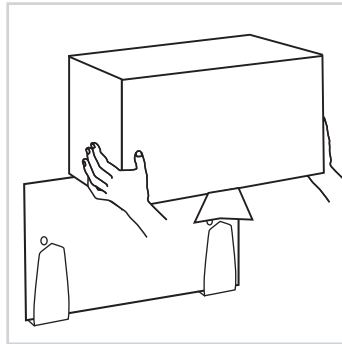
1 How to Load



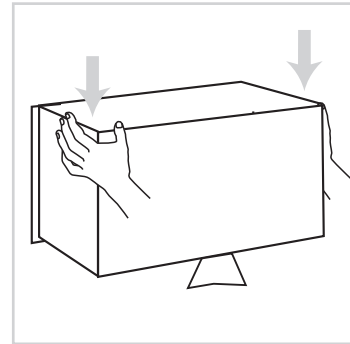
1. Remove empty box from dispenser by lifting straight up.



2. Remove diamond shaped panel from top of box and pull up first sheet.

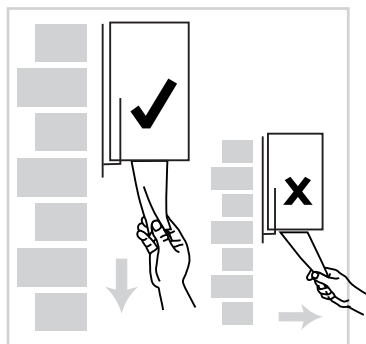


3. Turn box upside-down and align the two prongs on the wall-mounted dispenser with the two perforated slots in the top of the box.

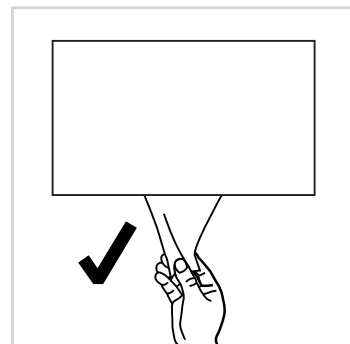


4. Push down firmly until prongs are completely inside the box.

2 How to Use



1. Always pull wiper straight down. Pulling at an angle will cause wipers to stream.



2. Grip wiper as low as possible to avoid taking two sheets at once.